



Roman military tunic

A short course about making and wearing.

LEG.XI.CPF. Moscow, 2020

Classic tunic - *pattern*

The tunic has a rectangular shape, and the width is greater than the length! Sewn from two pieces of the same size. In our experience, the optimal ratio of the finishing * length (**l**) and width (**w**) of the tunic to the height (**H**) of the legionnaire is the following formula:

$$l = G - 60 \text{ cm}$$

$$w = G - 50 \text{ cm}$$

Height (**H**)
180 cm

So with a height of 180 cm, the optimal length is 120 cm, and the width is 130 cm.

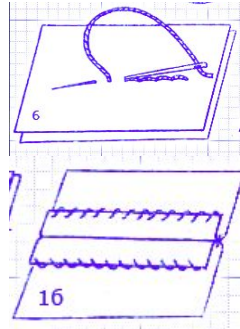
***do not forget to add 4 cm for the seams and folds when cutting.!**



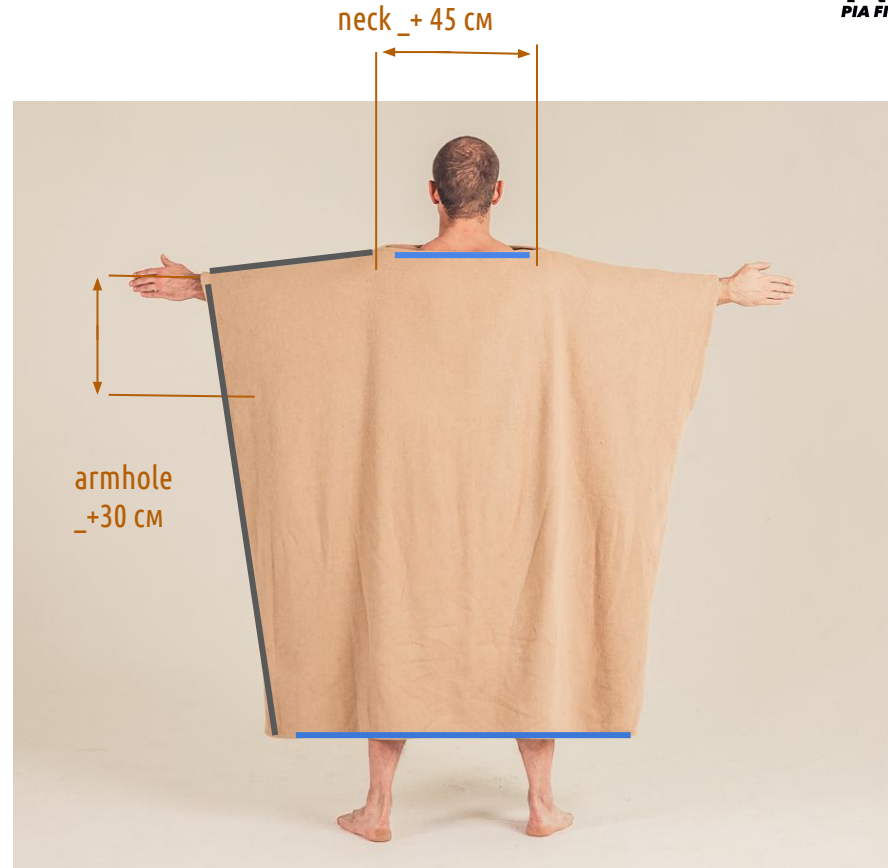
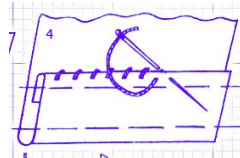
Classic tunic - *sewing*

Neck, adjustable to the width of the wearer's shoulders. The armhole is usually made 1.5 times smaller than the neckline. The neckline and armholes should be wide enough for assembling and draping the tunic, as well as for wearing it on one shoulder or with a naked torso.

Shoulder and side seams with an overlock seam (6.) Inner edge overcast (16.)



The collar and hem are finished with an advanced seam (4.)



Classic tunic - *draping and wearing*



Option №1 - ordinary drapering



Option №2 - draping with a knot



After you have carefully sewn the oversized bag, you need to learn how to properly wear and drape it. A rag that is unusual for a modern person, over time, will become for you a multifunctional and comfortable clothing that can be worn in different ways. Therefore, do not be shy about your household when you train in front of the mirror.;

Classic tunic - *draping and wearing*

Option №3 - on one shoulder



Option № 4 - naked torso



Such methods are convenient in the heat or during doing different hard work in camp.

Classic Tunic - *under armor*



Perfectly assembles and lies under the armor, partially performing the function of a subarmalis

Classic tunic - *prototypes*

So, a classic tunic is a comfortable and versatile piece of clothing that can be worn in different ways. Tunic is richly represented in pictorial, written sources and archeology. For sewing tunics, it is recommended to take soft natural wool.



Opt №4



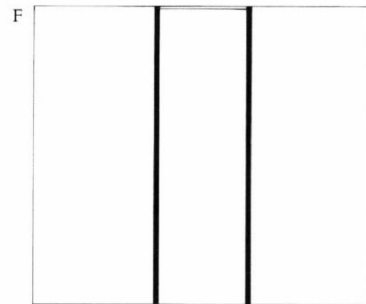
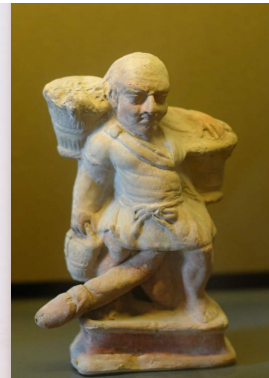
Opt №3



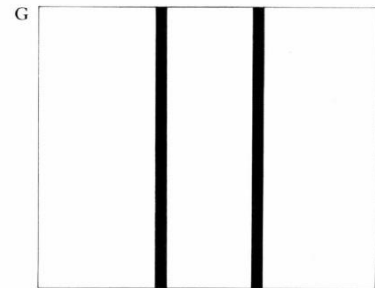
Opt №2



Opt №1



Nubia, Egypt Grave Q150. 1.27m long \times 1.40m wide. *After Thurman and Williams.*



Khirbet Qazone, Jordan. 1.17m long \times 1.42m wide. *After H. Granger-Taylor.*

Classic tunic - *lifehack...*;)

An important point! So that the folds on the tunic and the drapery do not get confused, do not crawl and the tucked-in tunic does not turn into a bag, like the old grandmother, ALWAYS use a woven belt to collect and fix the tunic. The ancestors were not fools.;



LEG.XI.CPF. - Moscow

Тимофей Быковский (Tibo) - optio of the IX.coh.

Fb:

<https://www.facebook.com/tibo.xi.legio>

<https://www.facebook.com/leg.XI.CPF.Moscow/>

e-mail: tibo@ratobor.com

